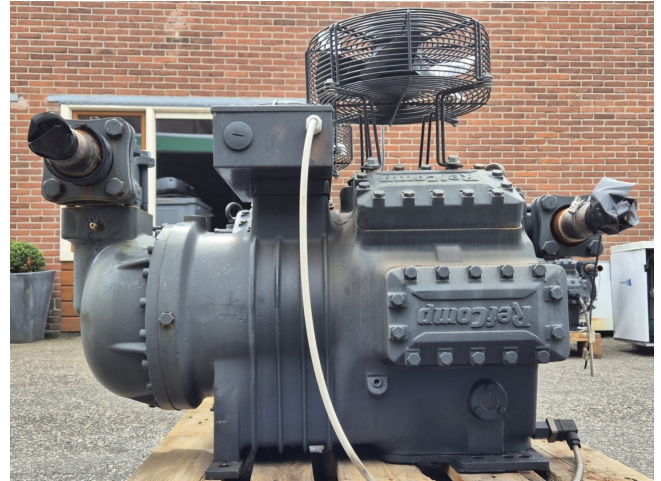


Refcomp SRC-L-160-L0

Specifications

Marka	Refcomp
Typ	SRC-L-160-L0
Czynnik chłodzący	Freon
kW at 0°C/+40°C	159,4
kW at -5°C/+40°C	130,3
kW at -10°C/+40°C	104,6
kW at -20°C/+40°C	63,4
kW at -30°C/+40°C	35,9
Okno widokowe	✓
m ³ / h	184,0
Uwagi	Y.o.b. 2007
Rozmiary	980x550x800 mm (LxWxH)
Stock	7



Description

Used Refcomp SRC-L-160-L0

Used Refcomp SRC-L-160-L0 semi-hermetic reciprocating compressor on Freon. Complete with a Hidria R09R-3132P-4T-3561 fan and a sight glass. The compressor has a displacement of 184 m³/h.

*Why choose for HOSBV? Were not only the largest used refrigeration specialist in Europe, but also, we deliver all equipment including an extensive test, warranty and industrial cleaning.

*Optional we can also perform a new paint job and arrange the logistics.

